

# Joint Service for Disabled Children



Janet Leach  
Head of the Joint Service for Disabled  
Children  
**Disabled Children are Everybody's  
Business!**



# Joint Service for Disabled Children

The Joint Service for Disabled Children is an innovative and creative partnership developed by and accountable to Enfield's Children's Trust. The service comprises:

- **Enfield Community Service** - representing health
- **The Early Intervention Support Service** - representing education
- **Cheviots Children's Disability Centre/Service** - representing social care

# Overview and Wider Context

## 2006-2011

- 2006 Parliamentary hearings
- 2007-2011 Aiming High for Disabled Children – a national transformation programme
- Every Disabled Child Matters - EDCM
- 2011 and beyond - Achieving Lasting Change

# Aiming High Transformation Programme

- Short Breaks – Enfield as Pathfinder
- Access to Child Care - DCATCH
- Transition
- Parent Participation
- Young People's Participation

# Partners

- Parents - 'Our Voice' Parent Forum, Parent2Parent Carer2Carer and Capag;
- Disabled children and young people;
- Adult's learning and physical disability teams – Occupational Therapy Services/Housing
- CAMHS
- The Disability Forum - Local Authority teams - SEN and special schools, the Play Development team, the Sports Development team, voluntary groups - Enfield Children and Young Person Service, Crossroads Care, Tottenham Hotspurs Foundation Community Team - and other organisations to support and promote opportunities and to improve the life chances of all disabled children and their families in Enfield

# Working with Parents

## They are the 'experts' on living with disability

Parent2Parent



# Key Challenges

Together with parents –

- Creating Strategic Linkages
- Joint Delivery with Health
- Commissioning
- Workforce Development

# A Changing Picture - How did we/how are we responding to...?

- A quest for citizenship
- Rise in ASD
- Rise in children with complex needs
- Inclusion



# Early Years

Early Years Inclusion Strategy -an integrated partnership –

PVI Settings

Children Centres

Champion Childminders

Together developing an inclusive ethos

Cheviots Children's Centre/EISS as the hub

# Numbers!

- Numbers of under 5s referred –
- April 2010 – March 2011 – 111 referrals
- April 2011 – March 2012 – 168 referrals
- 84 Training sessions – 29 different courses – 1197 places filled by 442 individuals
- Autism, challenging behaviour, medical needs and Child protection – most popular courses

# Ezel having fun at the Playing and Moving Group

- Ezel



# Short Breaks

## Short Break Duty

Menu of short breaks – changing and reflecting the different stages of family life

- Local Offer
- Direct Payments/Short Break Exchange
- Personalisation

# Statistics

2007/2008 – Less than 600 families in receipt of support and short breaks

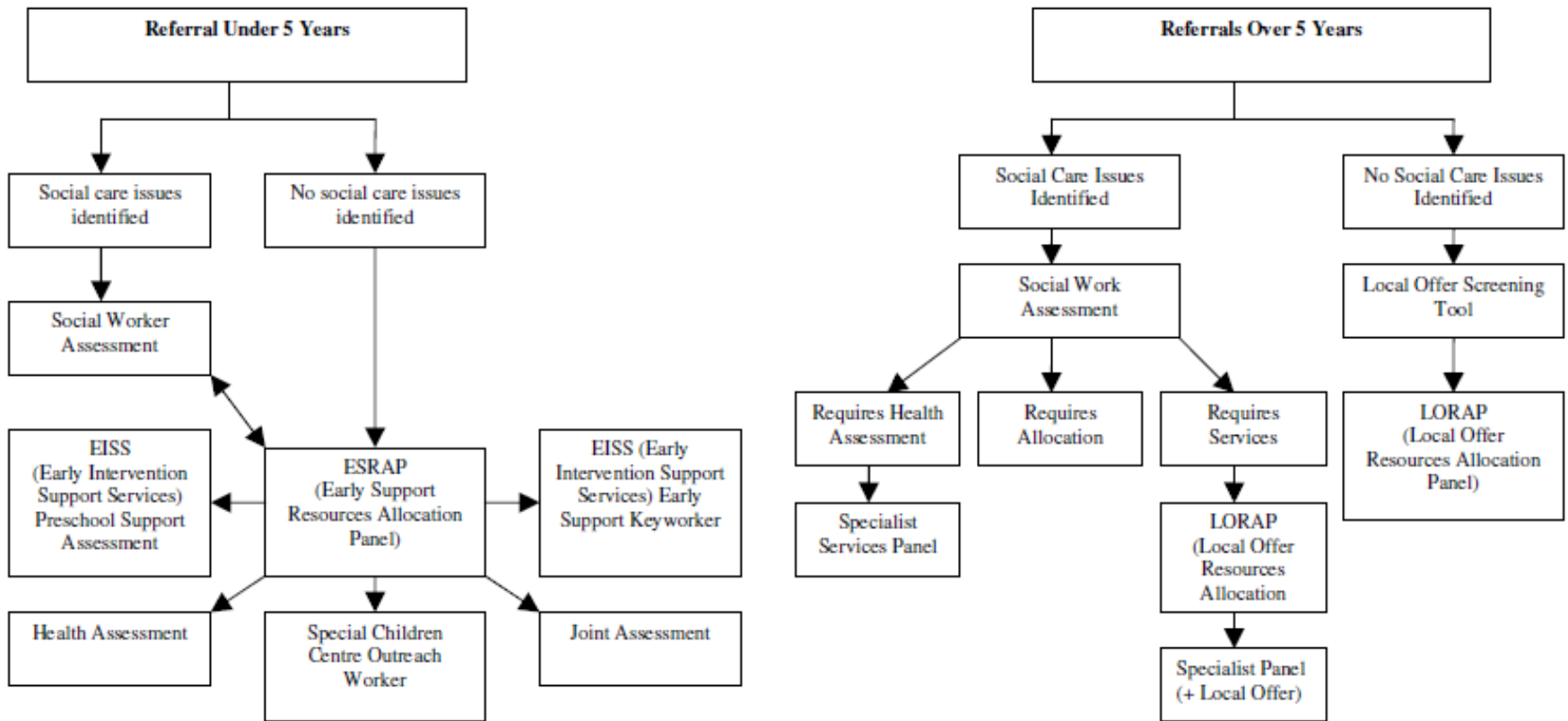
Over the past 4 years this has steadily increased

2011/2012 – 805 families reached – of these 153 have allocated Social Workers

Children's population – 71,671

1.2% equates to - 860

# ENFIELD'S JOINT SERVICE FOR DISABLED CHILDREN REFERRAL PATHWAYS



# Inclusion

- Inclusive holiday play schemes – Joint Service/ the Play Development Team/Capag
- Inclusive youth activities – Joint Service/the Youth Service/Capag – Befriending and Buddying
- Myplace - key partners in this exciting venture
- 2011/12 - 150 children and young people – aged between 5 and 17 years accessing inclusive play schemes, after school clubs and youth activities.
- Supporting sustainability!

# Young Disabled and in Control – Citizenship!

- Young Consultants
- Myplace
- Youth Parliament
- Meeting Councillors
- Meeting MPs – House of Commons



# 2007 – 2011: What did we do?

## MOVING ON

- National Transition Support Programme: Progression from the middle to the top development stage
- Transition Development Manager appointed in 2009
- Development of 'Moving On' transition information materials
- Development of the 'Moving On' Transition Events Calendar



# 2011 – 2012: What did we do?

## MOVING ON

- Person Centred Transition Reviews - developed together with SEN and Special Schools
- Includes: My Review, Moving On Action Plan and Guidelines for Mainstream and Special Schools
- Click Start developed in partnership with a local school
- Klik In – European Pilot project for disabled young people in Enfield
- Development of the Transition Pathway to Careers, Supported Employment and Meaningful Activities
- Planned Personal Budget Pilot
- Transition Help for Communities Project in Partnership with Tottenham Hotspur Foundation



# The sum of the Parts....

Working learning and training together

For example - PCT and Social Care Occupational Therapists - OT based at Cheviots

Maximising our resources – financial and human – jointly commissioning and funding. – means we are - Keeping children at home and in their communities – an ‘ordinary life’

# On-going Challenges

- Transport
- Housing
- Green Paper – impact of the single plan – no more statements of SEN

# Children and Young People's Plan 2011-15 Key Objectives – Make it relevant locally

- Increasing the effectiveness of early intervention services to reduce the need for specialist services
- Providing effective safeguarding services operating to the highest national standards
- Providing effective specialist services for disabled children

# Council Key Objectives – How are you achieving local priorities?

## 1. Fairness for all

Enable disabled young people to achieve their full potential and live independently

## 2. Growth and Sustainability

Maximise opportunities for disabled young people

## 3. Strong Communities

Encourage active citizenship

Develop opportunities for young people to influence decision making and shape future services via the Area Youth Forums and the Enfield Youth Parliament

Develop a range of positive activities for young people to access

# Disabled children are everybody's business!

